

Link Extendable Table

The first Midj extendable round table features elegant curves and a solid four-star base.

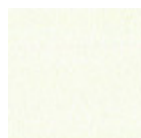
Link is particularly versatile thanks to two top versions available: round or square / oval. Link comes as an original table, perfect whether at home or in the office thanks to its tops: whatever their form, face-to-face relationship is guaranteed.

Steel laser cut frame supports a framework with a central opening mechanism. The stability is guaranteed by the four-foot base, even in the larger version.



Colors and Materials

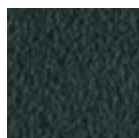
Structure



White Steel



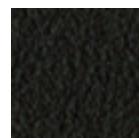
Sand Steel



Grafite Steel

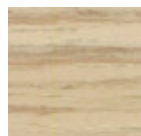


Bronze Steel

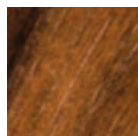


Brown Steel

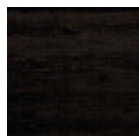
Coating



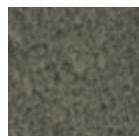
Veneered wood light oak



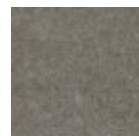
Veneered Flamed Walnut



Black Lacquered Veneered Wood



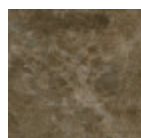
Lead Crystalceramic



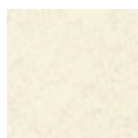
Cement Savoia Crystalceramic



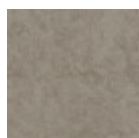
Charcoal Savoia Crystalceramic



Emperador Marble Crystalceramic

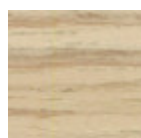


Oxide White Crystalceramic

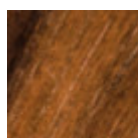


Oxide Sand Crystalceramic

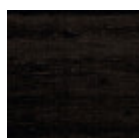
Extensions



Veneered wood light oak



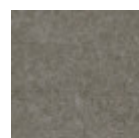
Veneered Flamed Walnut



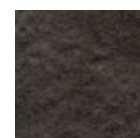
Black Lacquered Veneered Wood



Lead Crystalceramic



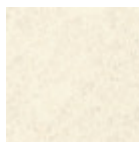
Cement Savoia Crystalceramic



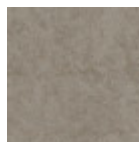
Charcoal Savoia Crystalceramic



**Emperador Marble
Crystalceramic**

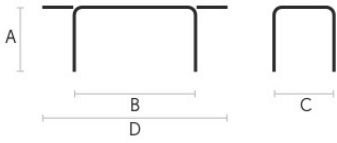


**Oxide White
Crystalceramic**



**Oxide Sand
Crystalceramic**

Dimensions



	cm	inch
A	76	29.9
B	120	47.2
C	120	47.2
D	180	70.9

Volumetric Details

Weight 51 Kg

Volume 0.75 mc

Package 2

Downloads

3D Link (zip) - <https://www.midj.com/images/uploads/resources/link-3d.zip>