

Moonlight Table

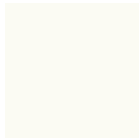
design Franco Poli

Moonlight fixed table with frame in Baydur® and crystal or cristalceramic top.



Colors and Materials

Structure



White baydur

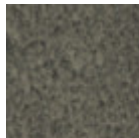


Dark Grey Baydur

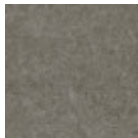
Coating



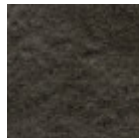
Extraclear
Transparent Glass



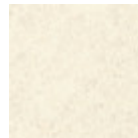
Lead Crystalceramic



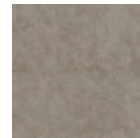
Cement Savoia
Crystalceramic



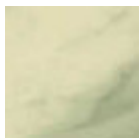
Charcoal Savoia
Crystalceramic



Oxide White
Crystalceramic



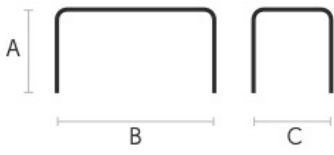
Oxide Sand
Crystalceramic



Ceramic with effect
calacatta marble

1 color

Dimensions



Volumetric Details

Weight 88 Kg
Volume 0.6 mc
Package 2

	A (cm) (inch)	B (cm) (inch)	C (cm) (inch)
220 x 116 (cm) (inch)	75 29.5	220 86.6	116 45.7
200 x 100 (cm) (inch)	75 29.5	200 78.7	100 39.4

Downloads

3D Moonlight (zip) - <https://www.midj.com/images/uploads/resources/moonlight-3d.zip>