



# More Extendable Table

Extendable table with four legs base in lacquered steel. Top available in melamine, lacquered wood, Fenix, crystal or crystalceramic.

For the 140x90 versions available top in veneered lacquered finish flamed walnut.



## Colors and Materials

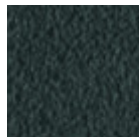
### Structure



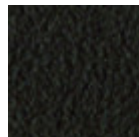
White Steel



Sand Steel



Grafite Steel



Brown Steel

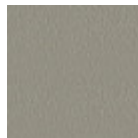


Aluminium

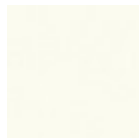
### Coating



Melamine  
8 Colors



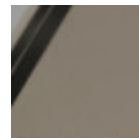
Laquered MDF  
4 Colors



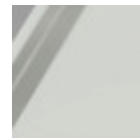
White Fenix



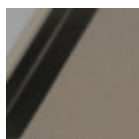
Black Fenix



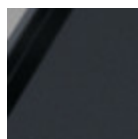
Glossy Sand Glass



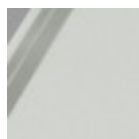
Extraclear Glossy  
White Glass



Matt Sand  
Antiscratch Glass



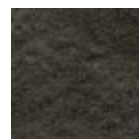
Matt Graphite  
Antiscratch Glass



Extra Clear Matt  
White Antiscratch  
Glass



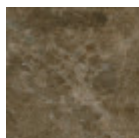
Lead Crystalceramic



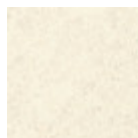
Charcoal Savoia  
Crystalceramic



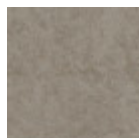
Cement Savoia  
Crystalceramic



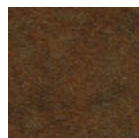
Emperador Marble  
Crystalceramic



Oxide White  
Crystalceramic



Oxide Sand  
Crystalceramic

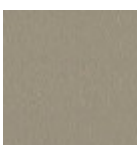


Corten  
Crystalceramic



Veneered Flamed  
Walnut

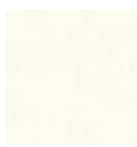
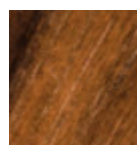
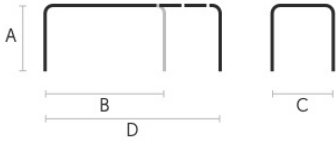
### Extensions

**Melamine**

8 Colors

**Laquered MDF**

4 Colors

**White Fenix****Black Fenix****Veneered Flamed Walnut****Dimensions****Volumetric Details****Weight** 66 Kg**Volume** 0.27 mc**Package** 4

	<b>A</b>	<b>B</b>	<b>C</b>	<b>D</b>
	<b>(cm)</b>	<b>(cm)</b>	<b>(cm)</b>	<b>(cm)</b>
	(inch)	(inch)	(inch)	(inch)
<b>100x70</b>	75	100	70	140
<b>(cm)</b>	29.5	39.4	27.6	55.1
(inch)				
<b>120x80</b>	75	120	80	170
<b>(cm)</b>	29.5	47.2	31.5	66.9
(inch)				
<b>140x90</b>	75	140	90	200
<b>(cm)</b>	29.5	55.1	35.4	78.7
(inch)				
<b>L</b>				
<b>140x90</b>	75	140	90	230
<b>(cm)</b>	29.5	55.1	35.4	90.6
(inch)				
<b>XL</b>				
<b>110x80</b>	75	110	80	245
<b>(cm)</b>	29.5	43.3	31.5	96.5
(inch)				
<b>XL</b>				
<b>140x90</b>	75	140	90	290
<b>(cm)</b>	29.5	55.1	35.4	114.2
(inch)				