

Suite Table

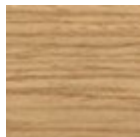
design AtelierNanni, 2017

Table with wooden four legs base. Supports in lacquered steel, rectangular top with rounded corners in glass or crystalceramic.



Colors and Materials

Structure

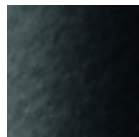


Lacquered ash

9 Colors



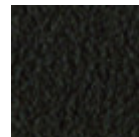
White Steel



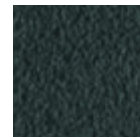
Acciaio Nero



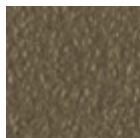
Acciaio Corda



Acciaio Marrone



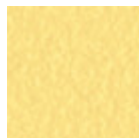
Grafite Steel



Fango Steel



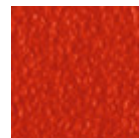
Bronze Steel



Pastel Yellow Steel



Ocher Steel



Red steel



Sage Green Steel



Light blue steel

1 color



Ocean Blue Steel



Light Grey Steel



Facepowder Pink Steel

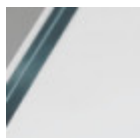


Pink Gold

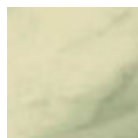


Black Nickel

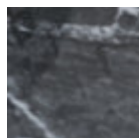
Coating



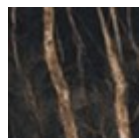
Extraclear
Transparent Glass



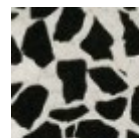
Crystalceramic with
effect calacatta
marble



Crystalceramic
Glossy Black Greek
Marble

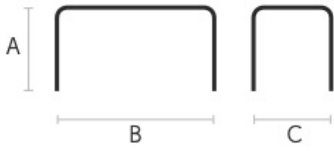


Crystalceramic with
effect noir desir
marble



Venetian
crystalceramic

Dimensions



Volumetric Details

Weight 98 Kg

Volume 0.53 mc

Package 1

	A (cm) (inch)	B (cm) (inch)	C (cm) (inch)
220x116 (cm) (inch)	76 29.9	220 86.6	116 45.7
250x120 (cm) (inch)	76 29.9	250 98.4	120 47.2

Downloads

[3D Suite 220x116 \(zip\)](https://www.midj.com/images/uploads/resources/suite-220x116-3d.zip) - <https://www.midj.com/images/uploads/resources/suite-220x116-3d.zip>

[3D Suite 250x120 \(zip\)](https://www.midj.com/images/uploads/resources/suite-250x120-3d.zip) - <https://www.midj.com/images/uploads/resources/suite-250x120-3d.zip>