

Paul Ø120 Extendable Table

Extendable table with steel base. Wooden or crystalceramic top, matching extensions.



Colors and Materials

Structure



White Steel



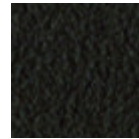
Sand Steel



Grafite Steel



Black Steel

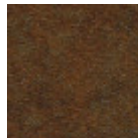


Brown Steel

Coating



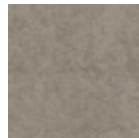
Crystalceramic with effect calacatta marble



Corten Crystalceramic



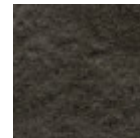
Oxide White Crystalceramic



Oxide Sand Crystalceramic



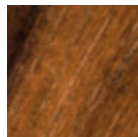
Lead Crystalceramic



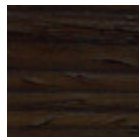
Charcoal Savoia Crystalceramic



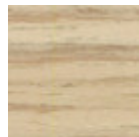
Cement Savoia Crystalceramic



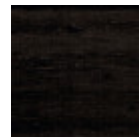
Veneered Flamed Walnut



Veneered Wood Dark Oak

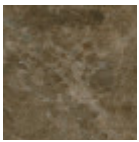


Veneered wood light oak

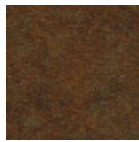


Black Lacquered Veneered Wood

Extensions



**Emperador Marble
Crystalceramic**



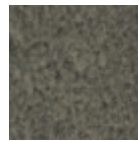
**Corten
Crystalceramic**



**Oxide White
Crystalceramic**



**Oxide Sand
Crystalceramic**



Lead Crystalceramic



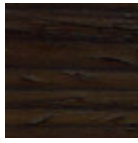
**Charcoal Savoia
Crystalceramic**



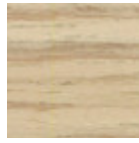
**Cement Savoia
Crystalceramic**



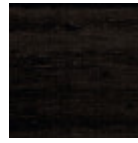
**Veneered Flamed
Walnut**



**Veneered Wood
Dark Oak**



**Veneered wood light
oak**



**Black Lacquered
Veneered Wood**

Dimensions

Dimensions

Volumetric Details

Weight 51 Kg

Volume 0.75 mc

Package 3

Image not found or type unknown

	cm	inch
A	75	29.5
B	120	47.2
C	120	47.2
D	180	70.9

Paul botte Extendable Table

Extendable table with steel base. Wooden or crystalceramic top, matching extensions.



Colors and Materials

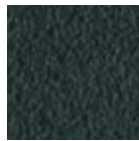
Structure



White Steel



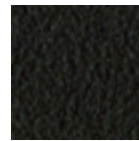
Sand Steel



Grafite Steel

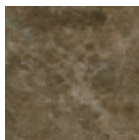


Black Steel

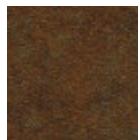


Brown Steel

Coating



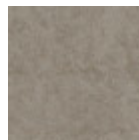
Emperador Marble
Crystalceramic



Corten
Crystalceramic



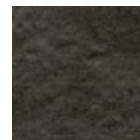
Oxide White
Crystalceramic



Oxide Sand
Crystalceramic



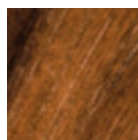
Lead Crystalceramic



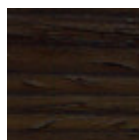
Charcoal Savoia
Crystalceramic



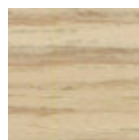
Cement Savoia
Crystalceramic



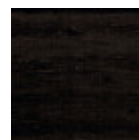
Veneered Flamed
Walnut



Veneered Wood
Dark Oak

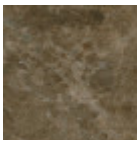


Veneered wood light
oak

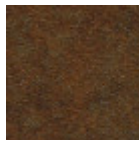


Black Lacquered
Veneered Wood

Extensions



**Emperador Marble
Crystalceramic**



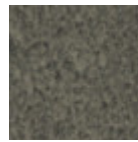
**Corten
Crystalceramic**



**Oxide White
Crystalceramic**



**Oxide Sand
Crystalceramic**



Lead Crystalceramic



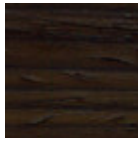
**Charcoal Savoia
Crystalceramic**



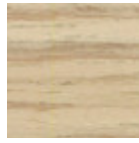
**Cement Savoia
Crystalceramic**



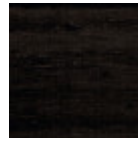
**Veneered Flamed
Walnut**



**Veneered Wood
Dark Oak**



**Veneered wood light
oak**



**Black Lacquered
Veneered Wood**

Dimensions

Dimensions

Volumetric Details

Weight 51 Kg

Volume 0.75 mc

Package 3

Image not found or type unknown

	cm	inch
A	75	29.5
B	120	47.2
C	120	47.2
D	180	70.9